

**Crompton**



**LED Product Explorer 2018**

**Crompton Greaves Consumer Electricals Limited**

w.e.f. 1st January 2018

Location of Crompton Facilities in India





## Crompton

### ***Traditional craftsmanship. Tomorrow's innovation.***

It's what sets Crompton apart. It's at the heart of everything we put into our products. It's why millions of people in India have come to rely on Crompton to provide comfort and convenience

Every Crompton Consumer Product has been meticulously designed and crafted to be more than just beautiful, more than just another product. It's why our customers have come to demand Crompton performance time and time again

Because for more than a century Crompton has been setting the standard for Product quality, reliability and performance. And today we're about a lot more than tradition. Consumer Products that produce that wow response whenever you enter a room. Products that express your personality, that reflect your lifestyle. Products that help you get the most out of your all utility investments. Precisely engineered, hand crafted and built to last. Our commitment to you to provide the best styles and the highest industry quality in Consumer Products and accessories.

With our inhouse R&D team, we always try to make the difference and set the benchmark in the product quality through meaningful innovation. Crompton product warranty is backed by excellent service network and are designed with easy to use/ install features that make it unique and convenient.



The Brihanmumbai Municipal Corporation (BMC) HQ Mumbai building looks even more splendid now after being lit up with LED lights as it enters its 125th year.

The spectacular lighting of this iconic building has been carried out by Crompton using dynamic RGBW LED facade luminaires, thus highlighting various architectural elements of the facade to experience various light colours and it's impact on the shape of those heritage elements. Also to create awareness about the facade heritage structure and beauty. Dynamic lighting also attracts people attention.

Crompton has now developed complete product portfolio for programmable RGBW LED facade lighting solutions.

## INDEX

- 07 INDOOR COMMERCIAL LIGHTING
- 22 INDUSTRIAL LIGHTING
- 27 FLAMPROOF INDUSTRIAL LIGHTING
- 28 CLEANROOM LIGHTING
- 30 STREET LIGHTING
- 34 FLOOD LIGHTING
- 38 LANDSCAPE LIGHTING
- 43 LED OUTDOOR ACCESSORIES

# INSTALLATIONS

Vidhan Bhavan,  
Nagpur



Bismi Hypermart,  
Vaitila



VIP,  
Angamaly



Semas,  
Thriponithara



Belur Station,  
Belur



Indian Institute of Management,  
Kolkata



Narmada Bridge,  
Gujrat



Marin Drive,  
Jamshedpur



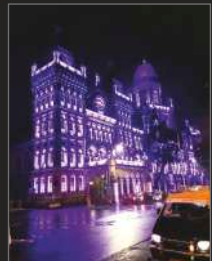
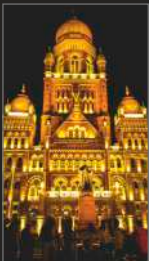
Indian Oil



ITC,  
Munger



Crompton LED RGBW facade lighting installations at BMC head quarters, Mumbai.





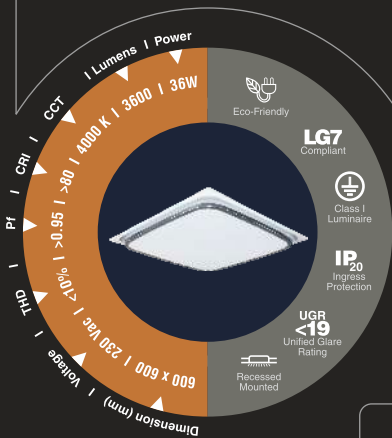


**INDOOR COMMERCIAL LIGHTING**

**New**

### Note from the designer :

“inspired by the chandelier, STELLUX-H introduces a premium feel as a first in this segment, with even lighting bounded by an attractive trim. The drop down diffuser brings in a visual comfort aiding LG7 compliance...”



### NEW Premium commercial range



STELLUX-I



STELLUX-P



STELLUX-S



STELLUX-H

For more information please get in touch with Crompton Sales Team

## STELLUX-I



CAT REF.	MRP (₹)
LCTRI-36-CDL	6000
LCTRI-36-TL	6000

LED STELLUX-I Recess mounted Signature series premium commercial luminaire  
Available in 4000°K & 5700°K

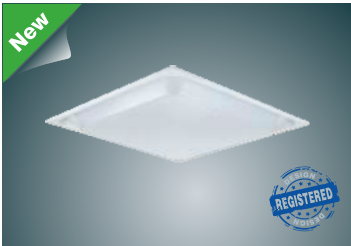
## STELLUX-P



CAT REF.	MRP (₹)
LCTRP-36-CDL	6100
LCTRP-36-TL	6100

LED STELLUX-P Recess mounted Signature series premium commercial luminaire  
Available in 4000°K & 5700°K

## STELLUX-S



CAT REF.	MRP (₹)
LCTRS-36-CDL	7000
LCTRS-36-TL	7000

LED STELLUX-S Recess mounted Signature series premium commercial luminaire  
Available in 4000°K & 5700°K

## STELLUX-H



CAT REF.	MRP (₹)
LCTRH-36-CDL	8700
LCTRH-36-TL	8700

LED STELLUX-H Recess mounted Signature series premium commercial luminaire  
Available in 4000°K & 5700°K



### TREND I

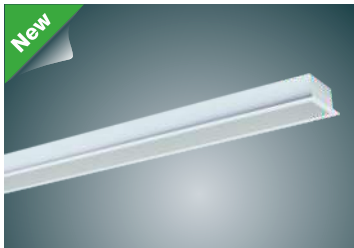


CAT REF.	MRP (₹)
LCLP54-36-CDL	4800
LCLP54-72-CDL	9600
LCLP75-40-CDL	6000
LCLP75-80-CDL	12000

Suspended linear in sleek design is suitable for all commercial spaces. Available in : 36W & 40W - 4 ft, 72W & 80W - 8 ft.

\*This luminaire is also available in up down light option. Add suffix /UD to the Cat Ref.

### TREND II



CAT REF.	MRP (₹)
LCLR66-30-CDL	4600
LCLR66-60-CDL	7900
LCLR90-36-CDL	5500
LCLR90-72-CDL	10500

Recessed mounted linear with its minimalistic shape offers complete versatility for all spaces such as offices, reception areas, meeting rooms and corridors.

Available in : 30W & 36W - 4 ft, 60W & 72W - 8 ft.

### LUNAR



CAT REF.	MRP (₹)
LCSUR3-25-CDL	6200
LCSUR4-36-CDL	8300
LCSUR6-40-CDL	13700

A timeless classic, the LUNAR is the top of its class when it comes to large disk feature lighting. With a range of 3 sizes, ideal for modern living spaces where design and interest are upper most.

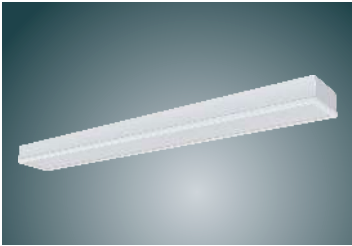
### LUNAR II



CAT REF.	MRP (₹)
LCSEFR3-25-CDL	5100
LCSEFR4-36-CDL	7200
LCSEFR6-40-CDL	12500

Surface variant of LUNAR gracefully enhances the modern architectural spaces

## TECHZONE



CAT REF.	MRP (₹)
LCRTTZN-40-CDL	5850
<p>Designed with simplicity and attention to detail in mind. This luminaire is perfect for techzone ceiling.</p>	

## AURA I



CAT REF.	MRP (₹)
LCPL-36-CDL(2X2)	3800
<p>Aura I pairs super bright LED's with highly efficient light-smoothing optics to deliver superior illumination and energy savings year after year</p>	

## AURA II



CAT REF.	MRP (₹)
LCPL-36-CDL(1X4)	4000
<p>Aura II is LED 1X4 Slim panel perfect for hospitals, classrooms, offices, and any other work space requiring high quality ambient lighting</p>	

## LINNET



CAT REF.	MRP (₹)
LCL-07-CDL	1150
LCL-14-CDL	1550
<p>They say that mirror never lie. Linnet helps you to give your true reflection without shadows. Available in 1ft &amp; 2ft.</p>	

## ARION



New

CAT REF.	MRP (₹)
LCTRDI-36-CDL	3100

LED 36W Direct/Indirect 2X2 Tile delivers a soft light into the space and provides a quiet ceiling

## ARION I



New

CAT REF.	MRP (₹)
LCTRQ1-36-CDL	2900

LED Perforation 2X2 Tile 36W/Single Window, modern design enabled by advanced LED light. It blends into ceiling plane and maintains uniform luminance across aperture to enhance visual comfort.

## ARION II

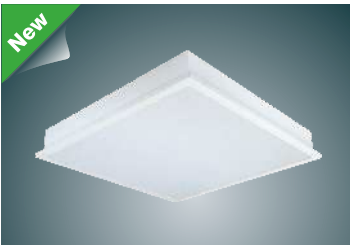


New

CAT REF.	MRP (₹)
LCTRQ2-36-CDL	2900

LED Perforated 2X2 Tile 36W/Double Window, modern design enabled by advanced LED light. It blends into ceiling plane and maintains uniform luminance across aperture to enhance visual comfort.

## POLARIS I

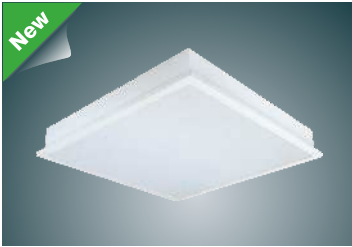


New

CAT REF.	MRP (₹)
LCTLRN-18-FO-CDL	3200
LCTLRN-24-FO-CDL	3500
LCTLRN-30-FO-CDL	3600
LCTLRN-36-FO-CDL	3700
LCTLRN-50-FO-CDL	5700

LED Recessed full open 2X2 Tile, Glare free uniform illumination with longer life and less maintenance

## POLARIS II



CAT REF.	MRP (₹)
LCTLRP-24-FO-CDL	4000

Polaris II is a exquisitely designed luminaire which is bound to deliver extra ordinary lumens through its pure form and glare-less light. Recessed full open 2X2 (> 120 Lumen/Watt)

## POLARIS III



CAT REF.	MRP (₹)
LCTLSN-36-CDL	4000
LCTLRN-36-CDL	3600

LED Recessed/Surface 2X2 Tile

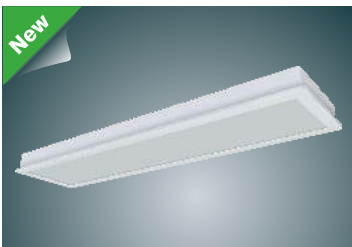
## POLARIS IV



CAT REF.	MRP (₹)
LCTLRN-18-CDL	2200
LCTLSN-18-CDL	2300
LCTLRN-24-CDL	2350
LCTLSN-24-CDL	2400

1X1 Recessed & Surface LED Ceiling Tile

## SPAN



CAT REF.	MRP (₹)
LCTLRN-40-CDL(1X4)	3800
LCTLSN-40-CDL(1X4)	4000

SPAN is recessed & surface LED 1X4 Flat Panel ceiling light with high performance, commercial grade solution suitable for hospitals, schools, offices and so much more.



## NEO I



CAT REF.	MRP (₹)
LCSRR-4-CDL	380
LCSRR-6-CDL	425

LED spot light ideal for wardrobes, furniture lighting, displays & interior decorations

## NEO II



CAT REF.	MRP (₹)
LCSSR-4-CDL	380
LCSSR-6-CDL	425

LED spot light ideal for wardrobes, furniture lighting, displays & interior decorations

## CROM ROUND



CAT REF.	MRP (₹)
LCDN-12-CDL/TL/WW	1250
LCDN-15-CDL/TL/WW	1350
LCDN-18-CDL/TL/WW	1450

LED Downlighter with aluminium housing

## CROM SQUARE



CAT REF.	MRP (₹)
LSDN-12-CDL/TL/WW	1350
LSDN-15-CDL/TL/WW	1450
LSDN-18-CDL/TL/WW	1550

LED Downlighter with aluminium housing

## INDOOR COMMERCIAL LIGHTING

### CREST



CAT REF.	MRP (₹)
LCDR-50-CDL/C	9000
LCDR-50-CDL/F	9000
LCDR-70-CDL/C	9500
LCDR-70-CDL/F	9500

LED COB Downlighter in 50W & 70W. Ideal for extra high ceiling applications such as airports & shopping malls (C=Clear, F=Frosted)

### PRAKHAR



CAT REF.	MRP (₹)
LCDN-30-CDL/WW	3300
LCDN-40-CDL/WW	3400
LCDN-50-CDL/WW	4000

Recessed LED Downlighter

### MOONLITE



CAT REF.	MRP (₹)
LCSR-06-CDL	700
LCSR-12-CDL	1000

Surface Mounted decorative LED luminaire

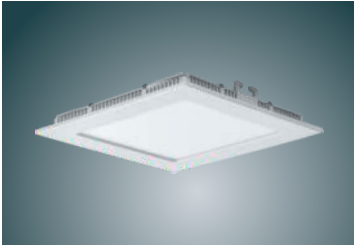
### PEARL



CAT REF.	MRP (₹)
LSCRM-3W-CDL/NW/WW	380
LSCRM-6W-CDL/NW/WW	550
LSCRM-12W-CDL/NW/WW	850
LSCRM-15W-CDL/NW/WW	1000
LSCRM-18W-CDL/NW/WW	1450

Round recessed LED flat Panel

## PEARL



CAT REF.	MRP (₹)
LSCSM-3W-CDL/NW/WW	380
LSCSM-6W-CDL/NW/WW	550
LSCSM-12W-CDL/NW/WW	850
LSCSM-15W-CDL/NW/WW	1000
LSCSM-18W-CDL/NW/WW	1450

Square recessed LED flat Panel

## GANNET



CAT REF.	MRP (₹)
LSDRN-24-CDL/WW	1700

Round recess mounted LED slim downlight with die-cast aluminium housing finished in premium white powder coating.

## GANNET



CAT REF.	MRP (₹)
LSDSN-24-CDL/WW	1700

Square recess mounted LED slim downlight with die-cast aluminium housing finished in premium white powder coating.

## QUARTZ



CAT REF.	MRP (₹)
LCDE-06-CDL	500
LCDE-09-CDL	600
LCDE-12-CDL	700
LCDE-15-CDL	850
LCDE-18-CDL	1050

Slim design LED recessed round downlighter with Superior light output and integral driver.

## INDOOR COMMERCIAL LIGHTING

### QUARTZ



CAT REF.	MRP (₹)
LSDE-06-CDL	500
LSDE-09-CDL	600
LSDE-12-CDL	700
LSDE-15-CDL	850
LSDE-18-CDL	1050

Slim design LED recessed round down lighter with Superior light output and integral driver.

### TRIM LINEA



CAT REF.	MRP (₹)
LCTL-18-CDL	500
LCTL-9-CDL	450

Durable LED Batten with decorative end caps.

### CUTE LINEA



CAT REF.	MRP (₹)
LCCLB08-CDL	600
LCCLB16-CDL	900
LCCLB24-CDL	1300

LED Batten in extruded aluminium housing with diffuser.

### TRIMLINE



CAT REF.	MRP (₹)
LDL-36-CDL	1100

36W, 5700K Integrated LED batten.

## RETRO LED T8



CAT REF.	MRP (₹)
LTT8-8	650
LTT8-16	700
LTT8-20	725

Linear LED T8 tubular lamp with extruded aluminium/pc body and PC diffuser and inbuilt driver.

## RETRO LED T8 (PC)



CAT REF.	MRP (₹)
LT8-8-865-2	500
LT8-20-865-2	525

LED T8 Tubelight with PC body.

## RETRO LED T5



CAT REF.	MRP (₹)
LT5RT-9-CDL	1000
LT5RT-14-CDL	1100
LT5RT-18-CDL	1150

T5 LED Tubelight with aluminium body.

## RETRO LED T5



CAT REF.	MRP (₹)
LT5RT1-9-CDL	500
LT5RT1-14-CDL	650
LT5RT1-18-CDL	700

T5 LED Tubelight with PC body.

## LED GLASS TUBE



CAT REF.	MRP (₹)
LGT8-16-865-2	On request
LGT8-20-865-2	On request
LED Glass Tube	

## RETRO PLL



CAT REF.	MRP (₹)
LPLLA-18-CDL	699
LED PLL Lamp to replace 36W conventional PLL lamps.	

## MIRROR LITE



CAT REF.	MRP (₹)
DMLN1LT8-8	180
DMLN1LT8-16	230
Batten suitable for LED T8 lamps.	

## BEETLE



CAT REF.	MRP (₹)
LST205050CDL/BL/WW	On request
LST205050CDL/RGB	On request
LST655050CDL/BL/WW	On request
LST655050CDL/RGB	On request
Beetle is just the right product to enhance the overall aesthetic effect. The bendable material of the strip makes it ideal for flexible decoration. Length : 5Mtr Available in IP20 & IP65 protection variant.	



Reception

ŠKODA





**INDUSTRIAL LIGHTING**



## SUPRA I



CAT REF.	MRP (₹)
LWV12-35-CDL	4000
LWV12-35-CDL-CPC	4300
LWV12-35-CDL-DPC	4300

- LED Wellglass with contemporary finless design and excellent thermal management along with IP66 protection.
- Available with heat resistance glass / clear pc/ diffused pc cover

## SUPRA II



CAT REF.	MRP (₹)
LWV12-70-CDL	6800

- Circular LED Wellglass with tapered fin design and exceptional thermal management along with IP66 protection.

## GLAZE



CAT REF.	MRP (₹)
LWVLT-40-CDL	5000

- New generation circular LED Well Glass with IP65 protection. Ideally suitable for industrial applications.

## SURROUND I



CAT REF.	MRP (₹)
LHB11-35-CDL/60	4300

- Circular LED Highbay with innovative finless design and excellent thermal management along with IP66 protection.

## SURROUND II



CAT REF.	MRP (₹)
LHB11-70-CDL/60	7000
LHB11-110-CDL/60	10600
LHB11-140-CDL/60	11800

- Circular LED Highbay with tapered fin design and excellent thermal management along with IP66 protection.

\*Also available in 115 lumen/watt.

## JUPITER I



CAT REF.	MRP (₹)
LHB-90-CDL/60	11500
LHB-100-CDL/60	11800
LHB-120-CDL/60	14000
LHB-135-CDL/60	15000
LHBN-150-CDL/60	16000

- Rectangular LED Highbay with excellent heat sink along with IP66 protection. A perfect solution for industrial applications.

\*Also available in 115 lumen/watt & 120 lumen/watt.

## JUPITER II

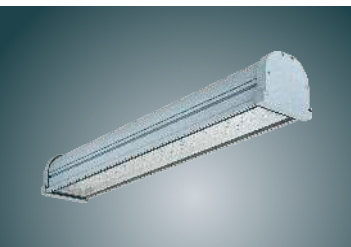


CAT REF.	MRP (₹)
LHB-200-CDL/60	25000
LHB-250-CDL/60	29500
LHB-300-CDL/60	31500
LHB-350-CDL/60	39500

- Rectangular LED Highbay with excellent heat sink along with IP66 protection. A perfect solution for industrial applications.

\*Also available in 115 lumen/watt & 120 lumen/watt.

## BEELINE



CAT REF.	MRP (₹)
LHBL-60-CDL	7000
LHBL-90-CDL	10500
LHBL-120-CDL	14000

- Linear LED Highbay with extruded housing which saves up to 50% energy compared to conventional system.
- Available in both symmetric & asymmetric distribution options.

## NEPTUNE I



CAT REF.	MRP (₹)
LCNR-80-CDL	9500
<ul style="list-style-type: none"> <li>■ Recess Mounted aesthetic LED Undercanopy Luminaire with IP66 Protection.</li> </ul>	

## NEPTUNE II



CAT REF.	MRP (₹)
LCNP-80-CDL	7500
LCNP-80-CDL(600)	10000
<ul style="list-style-type: none"> <li>■ Recess mounted under canopy luminaire with IP66 Protection.</li> <li>■ Also available with 600mm X 600mm frame</li> </ul>	

## SPARKLE



CAT REF.	MRP (₹)
LWV11-36-CDL/RFR	6000
<ul style="list-style-type: none"> <li>■ LED highbay with injection molded high performance poly carbonate refractor. Ideally suitable for warehouses, shipping docks, stairwells and low ceiling areas.</li> </ul>	

## LED BATTEN



CAT REF.	MRP (₹)
IGP131LT8-16	365
IGP132LT8-16	415
<ul style="list-style-type: none"> <li>■ Industrial Box type Luminaire suitable for single and twin T8 LED Tube.</li> </ul>	

## INDUSTRIAL LIGHTING

### ECO



CAT REF.	MRP (₹)
DIJB12LT8-20	250

- Industrial batten, suitable for single T8 LED tube.

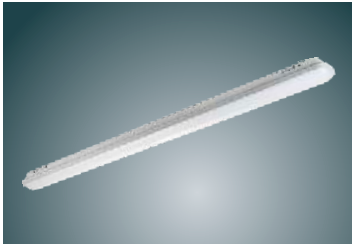
### SHIELD



CAT REF.	MRP (₹)
IPFC111LT8-16	1565
IPFC112LT8-16	1840

- Surface/suspended water proof industrial luminaire with polycarbonate housing and diffuser.
- Suitable for single and twin T8 LED tube.

### SHIELD+



CAT REF.	MRP (₹)
LPFC-18-CDL	3000
LPFC-36-CDL	4800

- Industrial luminaire with polycarbonate housing. Aluminum gear tray duly prewired with inbuilt LED Modules & accessories. IP65 Protection. 18W-2 feet / 36W-4 feet.

### SUNRISE



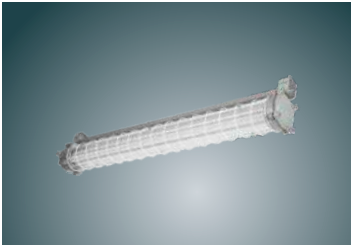
CAT REF.	MRP (₹)
LBH-10-CDL	1800
LBHE-10-CDL	1600

- A highly cost effective, compact, ultra low energy, modern design utility bulkhead suitable for indoor and outdoor applications with IP 65 protection.

# FLAMPROOF INDUSTRIAL LIGHTING

**Crompton**

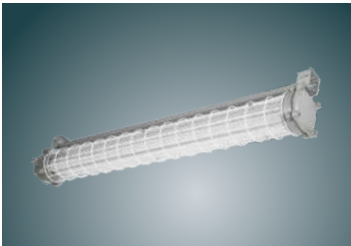
## FIAMMA I



CAT REF.	MRP (₹)
EXTN1LT8-8	6900
EXTN2LT8-8	7100

- CMRI Certified LED Flameproof 1X8W & 2X8W LED Tube Light fixture.
- Recommended for Gas / Vapor Group of IIA & IIB and Zone 1 & 2 IP65 Protection.

## FIAMMA II



CAT REF.	MRP (₹)
EXTN1LT8-16/20	8000
EXTN2LT8-16/20	8100

- CMRI Certified LED Flameproof 1X16W/20W & 2X16/20W LED Tube Light fixture.
- Recommended for Gas / Vapor Group of IIA & IIB and Zone 1 & IP65 Protection.

## RADIANCE



CAT REF.	MRP (₹)
IBFN100-15-CDL	4750

- CMRI Certified LED flameproof wellglass suitable for Gas Group of IIA & IIB and Zone 1 & 2.
- Die Cast Aluminum housing with heat resistant toughened glass / dome glass / external reflector. IP65 Protection.

## GLAZE PRO



CAT REF.	MRP (₹)
FWL1315-30-CDL	7800
FWL1315-40-CDL	9300
FWL1315-60-CDL	10300

- CMRI Certified LED Flameproof Bulkhead / Wellglass Luminaire recommended for Gas / Vapor Group of IIA & IIB and Zone 1 & 2.
  - Die Cast Aluminum housing with heat resistant toughened glass. IP65 protection.
- \* Please add suffix / CG & / HB to the Cat. Ref. for curved & reflector glass respectively.



## CLEANROOM LIGHTING

### CLEANLUX I



CAT REF.	MRP (₹)
LCBOR-24-CDL	4300
LCBOR-40-CDL	7200
LCBOR-50-CDL	8900
LCBOR-60-CDL	9000

- LCBOR-24-CDL 24w Recessed bottom opening (1X1)
- Recessed bottom opening LED clean room Luminaire 2x2
- Available in SS frame also

### CLEANLUX II



CAT REF.	MRP (₹)
LCBOR-40-CDL(1X4)	7500
LCBOR-50-CDL(1X4)	9200
LCBOR-60-CDL(1X4)	9400

- Recessed bottom opening LED clean room Luminaire 1x4

### CLEANLUX III



CAT REF.	MRP (₹)
LCBOR-40-CDL(1X2)	6300

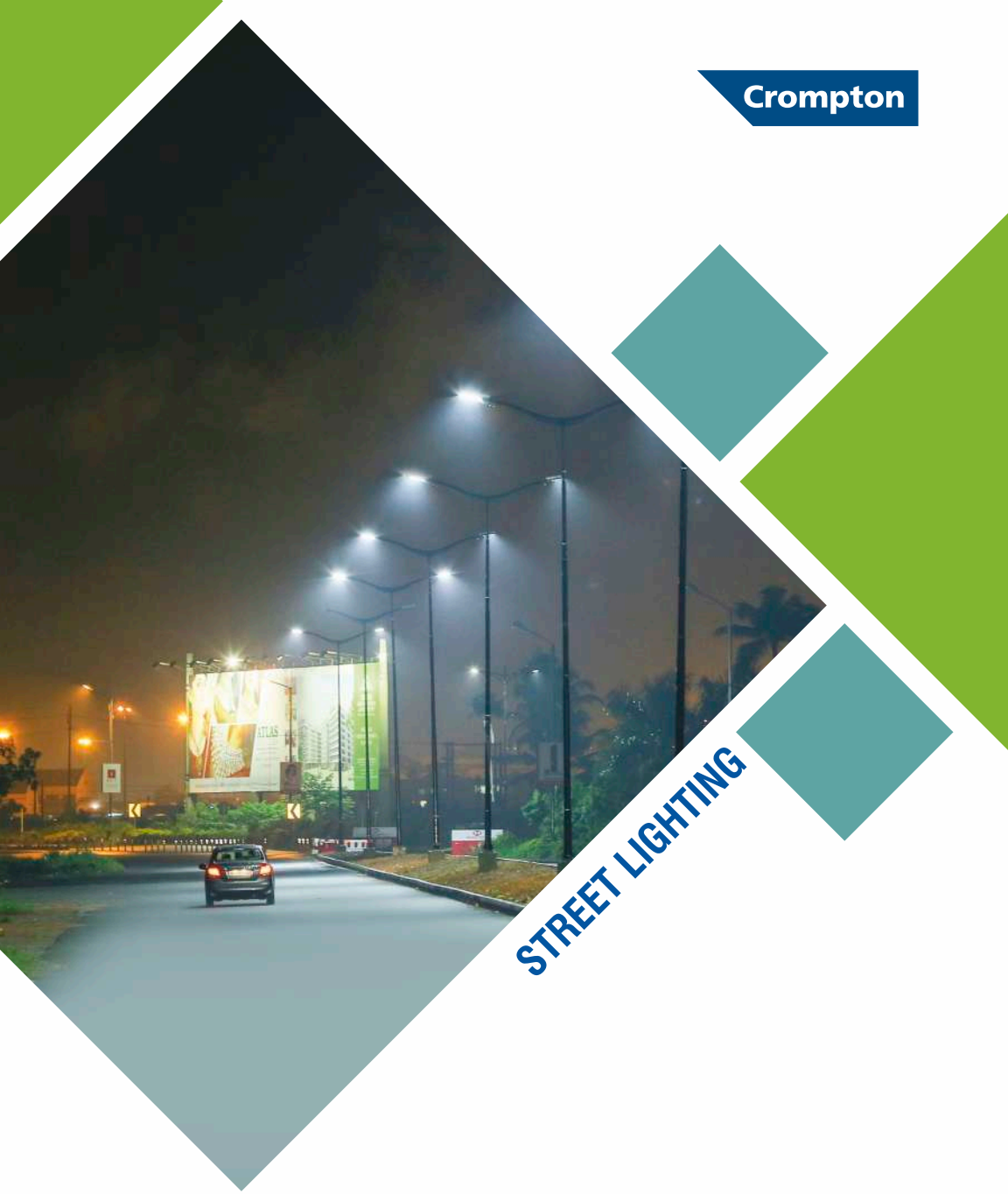
- Recessed bottom opening LED clean room Luminaire 1X2

### CLEANLUX IV



CAT REF.	MRP (₹)
LCTOR-24-CDL	6200
LCTOR-40-CDL	9900
LCTOR-50-CDL	11300
LCTOR-60-CDL	11500

- LCTOR-24-CDL Recessed top opening (1X1)
- Recessed top opening LED clean room Luminaire 2x2
- Available in SS frame also



**STREET LIGHTING**



# STREET LIGHTING

Crompton

## HAWK I



CAT REF.	MRP (₹)
LSTN-90-CDL-A	12450
LSTN-100-CDL-A	13000
LSTN-120-CDL-A	14600
LSTN-135-CDL-A	14800
LSTN1-150-CDL-A	15000

- Aerodynamically designed street light with excellent thermal management, inbuilt tilt angle arrangement with IP66 protection.

\*Also available in 115 lumen/watt & 120 lumen/watt.

## HAWK II



CAT REF.	MRP (₹)
LSTN-170-CDL-A	24500
LSTN-200-CDL-A	25700
LSTN-220-CDL-A	26200
LSTN-250-CDL-A	29000

- Aerodynamically designed street light with excellent thermal management, inbuilt tilt angle arrangement with IP66 protection.

\*Also available in 115 lumen/watt & 120 lumen/watt.

## NEXUS STAR



CAT REF.	MRP (₹)
LSTP-100-CDL	11000
LSTP-120-CDL	11300

- Aesthetically designed IP66 Protected Roadway Luminaire with excellent thermal management.

## OLYMPUS

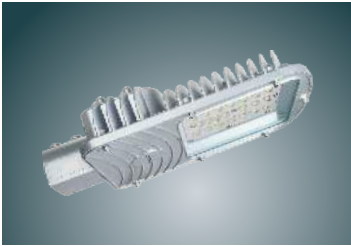


CAT REF.	MRP (₹)
LSTP-90-CDL	10500

- Aesthetically designed IP66 Protected Roadway Luminaire with excellent thermal management.

## STREET LIGHTING

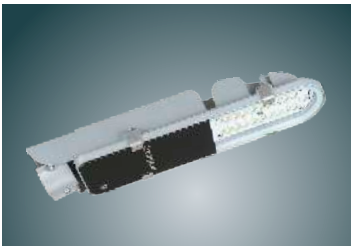
### NEXUS+



CAT REF.	MRP (₹)
LSTP-45-CDL	5500
LSTP-60-CDL	7000
LSTP-72-CDL	7500

- Aesthetically designed roadway luminaire with excellent thermal management

### FREEDOM+



CAT REF.	MRP (₹)
LSTS-30-CDL	3150
LSTS-40-CDL	3800
LSTS-45-CDL-1	4000

- It offers a highly effective and efficient street lighting solution with compact size & robust design.

### ASTRA



CAT REF.	MRP (₹)
LSTS-12-CDL	1830
LSTS-15-CDL	1830
LSTS-18-CDL	1980
LSTS-25-CDL	2300

- It offers a highly effective and efficient lighting solution to street light application. It is designed for the most effective thermal management.

### PINNACLE



CAT REF.	MRP (₹)
LST-20-CDL	2250

- New Compact Street Light with polycarbonate cover.





**FLOOD LIGHTING**

## FLOOD LIGHTING

### STARLIGHT



CAT REF.	MRP (₹)
LFLN11-30-CDL	3800
LFLN11-35-CDL/60	4000

- Circular LED Flood with innovative finless design and excellent thermal management and light distribution along with IP66 protection.

### PROFILE



CAT REF.	MRP (₹)
LFLE-50-CDL	4300

- Efficient high output LED for better distribution.

### PROFILE+



CAT REF.	MRP (₹)
LFL-60-CDL/60	5600
LFL-80-CDL/60	6700

- Pressure Die Cast with IP66 protection. Efficient high output emitter LED for better distribution.

### PLUTO



CAT REF.	MRP (₹)
LFLN-90-CDL/60	12000
LFLN-100-CDL/60	12200
LFLN-120-CDL/60	13500
LFLN-135-CDL/60	14000
LFLN-150-CDL/60	15500

- Rectangular LED Flood Light with innovative thermal management and available in multiple optics and equipped with IP66 protection.

\*Also available in 115 lumen/watt & 120 lumen/watt.

# FLOOD LIGHTING

## SECURE



CAT REF.	MRP (₹)
LSFO-170-CDL/60	22900
LSFO-200-CDL/60	25500
LSFO-250-CDL/60	28000
LSFO-300-CDL/60	32000
LSFO-350-CDL/60	40000

- Rectangular LED Flood Light with innovative thermal management and available with multiple optics and equipped with IP66 protection.
- \*Also available in 115 lumen/watt & 120 lumen/watt.

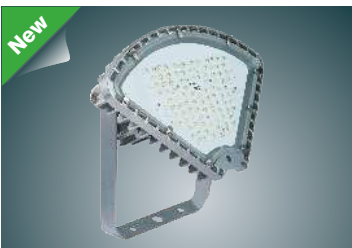
## OMEGA



CAT REF.	MRP (₹)
LFLN11-70-CDL/60	6500
LFLN11-110-CDL/60	10400
LFLN11-140-CDL/60	11900

- Circular LED Flood Light with tapered fin design and excellent thermal management along with IP66 protection.
- \*Also available in 115 lumen/watt.

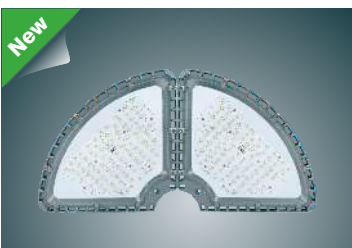
## MAGPIE



CAT REF.	MRP (₹)
LFLPI-200-CDL/60	20400
LFLPI-250-CDL / 60	24000

- LED Flood Light with Unique design and thermal management. Ideal for stadium lighting and Highmast applications.

## MAGPIE+



CAT REF.	MRP (₹)
LFLPI-400-CDL/60	46300
LFLPI-500-CDL/60	51400

- Unique Modular Design and Scalable Solution with IP66 protection.
- Ideal for stadium lighting and Highmast applications.





**LANDSCAPE LIGHTING**



## FERN



CAT REF.	MRP (₹)
LPTOI-45-CDL	17000
LPTOI-45-T	17000

- Decorative indirect post top for garden & landscape lighting with IP 65 protection.
- Resistant to impact and corrosion.
- Anti Glare and uniform distribution.

## MAPLE



CAT REF.	MRP (₹)
LPTO-40-CDL	10000
LPTO-40-CDL /M	10200
LPTO-60-CDL	12000
LPTO-60-CDL/M	12200

- Decorative Post top for 360° indirect light with IP 65 protection.
- Resistant to impact and corrosion. Glare-free and better uniformity.

## NEBULA



CAT REF.	MRP (₹)
LPTM-40-CDL	8000

- IP65 Rated LED Post Top with, moonlight effect and efficient light distribution.
- Also available with integrated decorative pole on request.

## HERITAGE



CAT REF.	MRP (₹)
LPTH-20-CDL	5000
LPTH-20-WW	5000

- IP65 Rated LED Post Top ideal to lit up parks, garden ways and heritage sites.
- Available in multiple Colour Temperatures.

## EMPIRE



CAT REF.	MRP (₹)
LPTE-60-CDL	22000
LPTE-120-CDL	26500

- IP66 Rated Decorative Street Light for garden ways and other City Beautification Applications.

## TWISTER



CAT REF.	MRP (₹)
LBLTW-10-CDL	4200
LBLTW-10-WW	4400

- IP65 Rated LED Bollard with robust design and efficient light distribution.
- Available in multiple coherent Colour Temperatures.

## SYRUS



CAT REF.	MRP (₹)
LBLSR-10-CDL	4400
LBLSR-10-WW	4600

- IP65 Rated LED Bollard with robust design and efficient light distribution.
- Available in multiple coherent Colour Temperatures.

## LIARA



CAT REF.	MRP (₹)
LBLSN-10-CDL	6000

- IP65 rated Inverted Pyramid Tripod type LED Bollard with soft 360 deg light distribution.

## MAYA I



CAT REF.	MRP (₹)
LBLA1-10-CDL	3500
<ul style="list-style-type: none"> <li>■ Pressure die cast powder coated housing with PC diffuser.</li> <li>■ Efficient high output LED with IP 66 protection.</li> </ul>	

## MAYA II



CAT REF.	MRP (₹)
LBLA2-10-CDL	3500
<ul style="list-style-type: none"> <li>■ Pressure die cast powder coated housing with PC diffuser.</li> <li>■ Efficient high output LED with IP 66 protection.</li> </ul>	

## MAYA III



CAT REF.	MRP (₹)
LBLA2-10-CDL	4200
<ul style="list-style-type: none"> <li>■ Pressure die cast powder coated housing with PC diffuser.</li> <li>■ Efficient high output LED with IP 66 protection.</li> </ul>	

## BEACON



CAT REF.	MRP (₹)
LSL-6-CDL	2300
LSL-6-WW	2300
<ul style="list-style-type: none"> <li>■ IP65 Rated LED Step Light for Outdoor Applications.</li> <li>■ Available in Multiple Colour Temperatures.</li> </ul>	

# LANDSCAPE LIGHTING

## TWILIGHT



CAT REF.	MRP (₹)
LUPDN-10-CDL	3100
LUPDN-10-WW	3100

- LED outdoor UP-DOWN light with IP65 protection
- Available with 3000°K & 5700°K

## STUD



CAT REF.	MRP (₹)
LBHP-10-CDL	850

- Perfect for interior and exterior applications within car parks, walkways, stairwells, corridors, Local authorities and housing associations as well as commercial buildings.



New



*Landscape LED Fixtures can say much about the aesthetics of an environment, often providing that "Signature" appearance for downtown places. Designing an effective Landscape demands selecting products that not only blend with the architecture, but are also in tune with their surroundings. The taller buildings and wider roads of downtown areas can often overshadow the smaller products. These areas require poles and fixtures with higher mounting heights. Moreover, heritage places or waterfronts will use more pedestrian based products to create an alluring environment. Whether a modern city, heritage site, waterfront or city park Crompton products combine architecture with performance to give any area a signature daytime appearance while providing effective night-time brilliance.*

\* Poles available on request

## LED OUTDOOR ACCESSORIES

### LED OUTDOOR DRIVERS



CAT REF.	Wattage	MRP (₹)
S0DVES-24-700-20W	20W	560
S0DRVES-36-600-25W	25W	580
S0DQL1-54-700-40W	40W	930
S0DQL-65-700-45W	45W	1000

### LED OUTDOOR DRIVERS



CAT REF.	Wattage	MRP (₹)
X075C070V107FNY1B0	75W	1600
X100C070V143FNY1B0	100W	2200
X150C070V210FNI1B0	150W	2700

### SURGE PROTECTION DEVICES



CAT REF.	Voltage	MRP (₹)
SRPS-5K-440	5KV	130

- Surge protection devices compatible with industrial & outdoor LED fixtures upto rated power of 75W

### SURGE PROTECTION DEVICES



CAT REF.	Voltage	MRP (₹)
SRPS-HP-5K-440	5KV	150

- Surge protection devices compatible with industrial & outdoor LED fixtures with rated power above 75W & upto 150W

### SURGE PROTECTION DEVICES






CAT REF.	Voltage	MRP (₹)
SRPSQ-10KV/5KA-440	10KV	470

- Surge protection devices compatible with industrial & outdoor LED fixtures.

# PHASED OUT PRODUCTS

INDOOR LUMINAIRES	CLEANROOM LUMINAIRES	INDUSTRIAL LUMINAIRES
LCTAR1-40-CDL	LBRP40CL22CD	LHBBXN-70-CDL/60
LCTAR2N-40-CDL	LBRP50CL22CD	LHBBXN-85-CDL/60
LCTAR3N-40-CDL	LBRP60CL22CD	LHBBXN-140-CDL/60
LCRTSNC40-CDL	LBSP40CL22CD	LHBBXN-170-CDL/60
LCRTSNC80-CDL	LBSP50CL22CD	LHBBX-270-CDL
LCPTSNCN40-CDL	LBSP60CL22CD	LHBBX-360-CDL
LCPTSNCN80-CDL	LTRP40CL22CD	LWWLT-36-CDL
LCPTSNC30-CDL	LTRP50CL22CD	LWWLT-36-CDL-AC
LCPTSNC60-CDL	LTRP60CL22CD	LWWLT-36-CDL-ACL
LCDD-12-CDL/TL/WW	<b>RETAIL LUMINAIRES</b>	LCB1-40-CDL
LCDD-15-CDL/TL/WW	LGSR-07-W	LCB1-40-TL
LCDD-18-CDL/TL/WW	LGSS-7-W	LCNOBX-65-CDL
LSDD-12-CDL/TL/WW	LGSR-10-W	<b>STREETLIGHT LUMINAIRES</b>
LSDD-15-CDL/TL/WW	LR-RFD2-20-WW/NDL-24/50D	LSTN-150-CDL-A
LSDD-18-CDL/TL/WW	LGSR-20-W	LSTP-30-CDL
LCDNR-30-CDL/WW	LGSR1-20-W	LSTP-40-CDL
LCDNR-40-CDL/WW	LR-RAD-20-WW/NDL-24/50D	LSTP-12-CDL
LCDNR-50-CDL/WW	LR-RAD-25-WW/NDL-24/50D	LSTP-15-CDL
LCDS-08-CDL	LGSR-18-W	LSTP-18-CDL
LCDS-14-CDL	LGSSR-7-W	LSTP-25-CDL*
LCDSPL-R-06-CDL	LGSR-23-W	LSTO-25-CDL
LCDSPL-R-12-CDL	LR-R1GD-20-WW/NDL-24/50D	<b>FLOODLIGHT LUMINAIRES</b>
LCDSPL-R-18-CDL	LR-R2GD-20-WW/NDL-24/50D	LSFN-72-CDL
LCDSPL-S-06-CDL	LGSS-20-W	LSFO-45-CDL
LCDSPL-S-12-CDL	LGSTR-7-W	LSFO-60-CDL
LCDSPL-S-18-CDL	LGSUSR-10-W	LFLE-30-CDL
LCSA1-36-CDL/G	LGTS-18-W	<b>LANDSCAPE LUMINAIRES</b>
LCSA1-36-CDL/S	LR-TLHG-20-WW/NDL-24/50D	LBSL1-10-CDL
LSDRM-24W-CDL/WW	LR-TLVG-20-WW/NDL-24/50D	
LSDSM-24W-CDL/WW	LCBD-40-TL/CDL	
LPLL-18-CDL		

  **National Accreditation Board for Testing and Calibration Laboratories**  
(A Constituent Board of Quality Council of India) 

**CERTIFICATE OF ACCREDITATION**

**TESTING LABORATORY, CROMPTON GREAVES CONSUMER ELECTRICALS LTD.**

has been assessed and accredited in accordance with the standard

**ISO/IEC 17025:2005**

"General Requirements for the Competence of Testing & Calibration Laboratories"

for its facilities at

B- 32, Road No. 18, Wagle Industrial Estate,  
Thane (West), Maharashtra

in the field of

**TESTING**


Certificate Number TC-6351  
Issue Date 27/09/2017 Valid Until 26/09/2019

This certificate remains valid for the Scope of Accreditation as specified in the annexure subject to continued satisfactory compliance to the above standard & the relevant requirements of NABL.  
(To see the scope of accreditation of this laboratory, you may also visit NABL website [www.nabl-india.org](http://www.nabl-india.org))

Signed for and on behalf of NABL

  
N. Venkateswaran  
Program Director

  
890769701003000290

  
Anil Relia  
Chief Executive Officer



## Applicable for LED Luminaires / LED Lamps

- MRP indicates Maximum Retail Price. Product can't be sold above MRP. Taxes and local levies as applicable is inclusive.
- Prices are in Indian Rupees.
- Prices of all LED luminaires in this price list are for standard luminaire.
- Prices are inclusive of GST as per prevailing rate at the time of supply. Any statutory variation will be to purchaser's account.
- Products in this pricelist are subject to discount as per the prevailing trade policy from time to time.
- Goods are dispatched by us on Purchaser's risk. All claims for loss, damage or shortage will be filed by the Purchasers directly with the carriers.
- Orders should be placed in multiples of case lot.
- Items other than those included in this price list are withdrawn from the range.
- This pricelist supersedes our pricelist dated 1st July 2016.
- All fixtures will be supplied as per our normal specifications. For additional features, please contact the nearest local office for details.
- Continuous design improvement is a routine practice at Crompton. Data provided may change without any prior information. Customers are advised to reconfirm the data or product dimensions before purchase at our local offices.
- Prices are subject to change without prior notice.
- All orders shall be placed in writing.
- Company reserves right to issue amendments, which may arise due to any errors in the price list.

CARE HAS BEEN TAKEN TO ENSURE THAT THE INFORMATION CONTAINED WITHIN IS CORRECT. HOWEVER, OWING TO CONTINUOUS INNOVATIONS AND IMPROVEMENTS THE ACTUAL PRODUCT WHEN SUPPLIED, MAY DIFFER FROM THE DETAILS GIVEN HEREIN.

PHOTOGRAPHS SHOWN HEREIN ARE INDICATIVE. PLEASE CHECK WITH NEAREST SALES OFFICE FOR THE ACTUAL PRODUCT.

CROMPTON RESERVES THE RIGHTS TO MAKE CHANGES IN THE DATA / DETAILS WITHOUT PRIOR NOTICE.

## SALES OFFICES

## NORTHERN REGION

Tel. No.

**New Delhi:**3rd Floor, Express Building, 9-10, Bahadur Shah Zafar Marg,  
Near ITO Crossing, New Delhi - 110 002, India.

23460790 / 23460795

**Lucknow:**

Saran Chambers II, 3rd floor, 5 Park Road, Lucknow - 226 001, India.

(0522) 33215650, 33215652

**Jalandhar:**

B XII/407, 2nd floor, Near BSF Chowk, Ladowali Road, Jalandhar - 144 001, India.

(0181) 3051395, 3051313

**Chandigarh:**CGCEL - Lighting Division, S.C.O 14, 1st Floor, Industrial & Business Park,  
Phase 2, Ram Darbar, Chandigarh - 160 002, India.

(0172) 4011440, 4012440

**Jaipur:**

Church Road, PO BOX 173, Jaipur - 302 001, India.

(0141) 3018800, 3018803

## EASTERN REGION

**Kolkata:**

IISCO House, 5th Floor, 50 Chowringhee Road, Kolkata - 700 071

(033) 22829681

**Guwahati:**C/o Assam Investment & Construction Co., G.S. Road, Dispur Near,  
Car Ghar, Ganeshguri, Guwahati - 781 005

08811094991

**Ranchi:**C/o Ess Ess Agencies, 3, Westend Park, Kaju Bagan, (Near DAV Junior School)  
PO Sehla Ratu Road, Ranchi - 834 005

(0651) 2512095

**Patna:**

Sri Sadan 3rd Floor House No:- 9, Patliputra Colony, Near Patliputra Golamber, Patna-800013

+91 9709101556

**Bhubaneswar:**

Janpath Tower, 3rd Floor, Ashok Nagar Unit II Bhubaneswar - 751 009

(0674) 2531429, 7873010100

## WESTERN REGION

**Mumbai:**

303-304, Orbit Plaza, Behind Marathe Udyog Bhavan, Prabhadevi, Mumbai - 400 025

(022) 61132751

**Ahmedabad:**

405, Gala Argos, (Near Gujarat College Cricket Ground, Ellis Bridge, Ahmedabad - 380006

+91 9909909332

**Pune:**

Office No.7, Wega Centre, A-Wing, Shankar Seth Road, Swargate. Pune - 411037

(020) 25534675

**Indore:**

117 Shagun Arcade, Vijay Nagar Square, Indore - 452011

+91 9713244447

**Nagpur:**Gokul Keshav Apartment, Plot No 3, Block No FF1 & FF2, First Floor,  
Deo Nagar Square, Khamla Main Road, Deo Nagar, Nagpur - 15. Maharashtra.(0712) 2531271, 2560870,  
2560 871**Raipur:**

A-311, Crystal Arcade, Lodhi Para Square, Shankar Nagar Road, Raipur - 492007

09993764357

**Baroda:**

10A, Vrindavan Colony, Near Hari Nagar, Water Tank, Gotri Road, Baroda - 3900007

(0265) 2332460, 2332227

## SOUTHERN REGION

**Cochin:**

Door No. 46/3387, Cochin House, 1st Floor, Arakkakadavu Road, Vennala PO., Cochin - 682 028

(0484) 2803860, 2807240

**Chennai:**Crompton House No.3, Dr. MGR Salai, Kodambakkam High Road, RBox No. 3316,  
Nungambakkam, Chennai - 600 034(044) 40989533, 40989553  
40989514**Madurai:**

2/3, Mangakayarsi Womens College Road, Parvai, Madurai - 625 402 (Satellite Off)

(0452) 2667771

**Coimbatore:**

SF219, Annamalai Industrial Park, Kalapatti, Coimbatore - 641 048

(0422) 3193101, 3193102

**Bangalore:**

J.P.Square, 3rd Floor, No.17, 3rd Cross, 5th Main, Chamrajpet, Bengaluru - 560 018

(080) 41391914, 41391902  
41391908**Hyderabad:**

No. 101 &amp; 102, Babukhan Millennium Centre, Somajiguda, Hyderabad - 500 082

(040) 40709971, +91 9885785757



# Crompton

**Crompton Greaves Consumer Electricals Limited**

Equinox Business Park, 1st Floor, Tower 3, LBS Marg,  
Kurla (W), Mumbai 400070. T: +91 22 6167 8499  
W: [www.crompton.co.in](http://www.crompton.co.in)